

DSUVIA™

(sufentanil)
sublingual tablet 30 mcg

Single-Use Product / Do Not Reuse



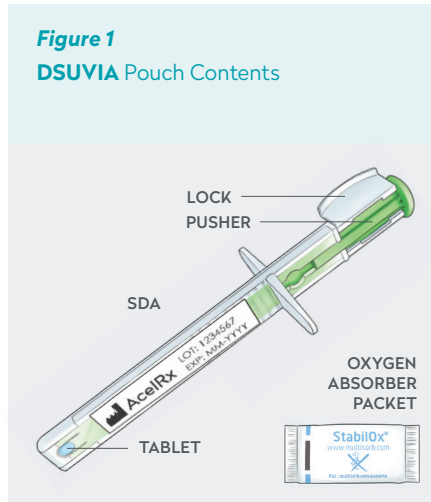
Do Not Use if Pouch Seal Is Broken.
Do Not Use if the Single-Dose Applicator (SDA) Is Damaged.

PATIENT INFORMATION:

- Instruct the patient to not chew or swallow the tablet.
- Instruct the patient to not eat or drink and minimize talking for 10 minutes after receiving the tablet.

DIRECTIONS FOR USE

Figure 1
DSUVIA Pouch Contents

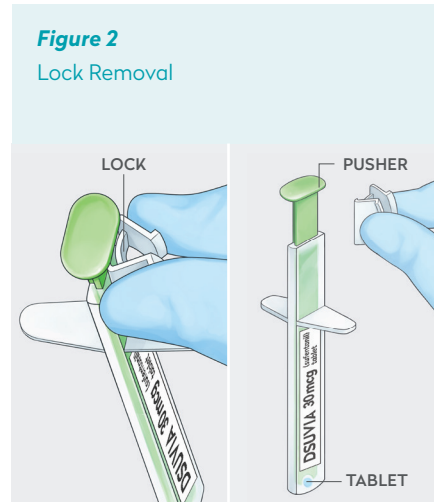


1. Only when ready to administer the medication, **TEAR OPEN** the pouch, **TEAR OPEN** the notched pouch across the top.
The pouch contains one clear plastic SDA with a single blue-colored tablet housed in the tip, and an oxygen absorber packet.
See Figure 1.

REMOVE SDA from pouch.

DISCARD the oxygen absorber packet.

Figure 2
Lock Removal



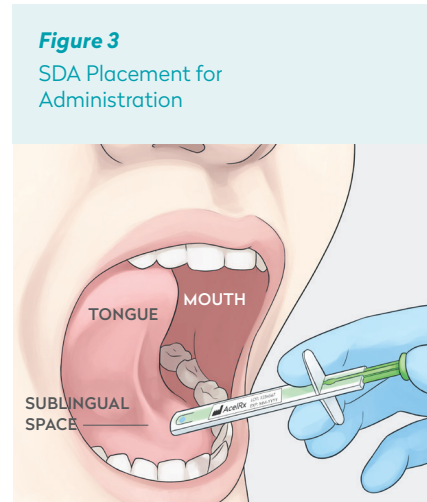
2. **REMOVE** the white Lock from the green Pusher by squeezing the sides together and detaching from Pusher.
See Figure 2.

DISCARD the Lock.

NOTE: To prevent ejecting the tablet accidentally:

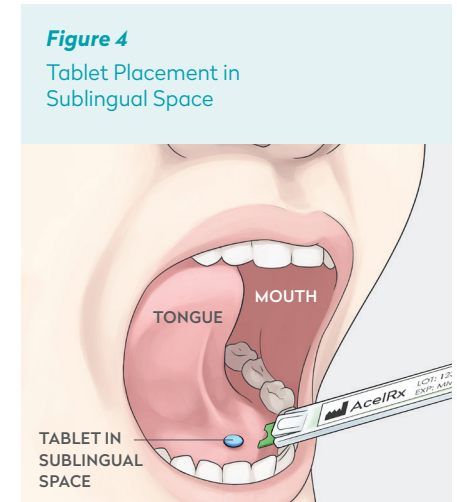
- Do not remove Lock until ready to administer
- Avoid touching the green Pusher before placing the SDA in the patient's mouth for administration

Figure 3
SDA Placement for Administration



3. **TELL** the patient to open their mouth and touch their tongue to the roof of their mouth if possible.
4. **REST** the SDA lightly on the patient's lower teeth or lips.
See Figure 3.
5. **PLACE** the SDA tip under the tongue and aim at the floor of the patient's mouth or sublingual space.
See Figure 3.
NOTE: Avoid direct mucosal contact with the SDA tip.
6. **GENTLY DEPRESS** the green Pusher to deliver the tablet to the patient's sublingual space.
See Figure 3.

Figure 4
Tablet Placement in Sublingual Space



7. **VISUALLY CONFIRM** tablet placement in the sublingual space.
See Figure 4.
NOTE: If tablet is NOT in the patient's mouth, it is important to retrieve and dispose of the tablet according to institutional CII waste procedures.
8. **DISCARD** the used SDA in biohazard waste after administration.